

**Foras Centrifugal pump cast  
iron DN80 x 80 mm x DN65 x 65  
mm DIN flange 10bar 22,5A  
400/690VAC blue type MN65  
160 B (0920314)**



**FORAS**  
WATER PUMPS

# TECHNICAL SPECIFICATIONS

Colour blue

Material cast iron

Material impeller 1 cast iron

Connection DIN flange

Voltage 400/690VAC

Max. temperature 90 °C

Minimum medium temperature -10 °C  
(continuous)

Maximum ambient temperature 40 °C

Minimum ambient temperature 0 °C

Type MN65 160 B

Output Power 15 HP

MWC 33 m

Size DN80 x 80 mm x DN65 x 65 mm

Seal type H

Length 635 mm

Width 290 mm

Weight 103.5 kg

Power 11 kW

Height 360 mm

Max flow rate 144 m<sup>3</sup>/h

BEP Capacity 110

BEP Head 27

Efficiency 56 %

Press 65

Suction 80

Packaging dimensions L/W/H 666 x 346 x 471 mm

## DIMENSIONS

Cb-1 160 mm

Cl-1 100 mm

Ct-1 200 mm

G-1 212 mm

H 360 mm

H 360 mm

L 635 mm

Mc 70 mm

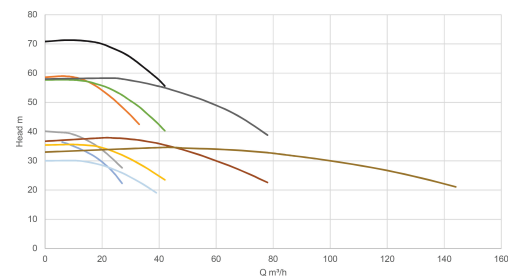
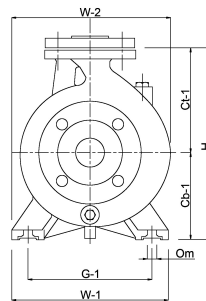
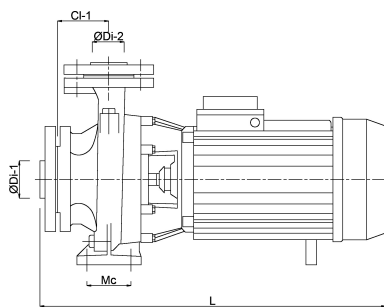
O 14 mm

W-1 280 mm

W-2 290 mm

ØDi-1 80 mm

ØDi-2 65 mm



## PRODUCT INFORMATION

The pumps are supplied complete with counter flanges with female thread.  
Mechanical seal.  
Maximum water temperature 90°C.

**Last modified date: 08/05/2026**

Bosta UK Ltd.  
Reflection House  
Olding Road  
Bury St. Edmunds  
Suffolk  
IP33 3TA

T +44 (0) 1284 716580  
E [enquiries@bosta.co.uk](mailto:enquiries@bosta.co.uk)  
<http://www.bosta.com>