

Grundfos Variable speed circulation pump stainless steel DN40 flange 10bar 0.8A 230VAC black/red WRAS type MAGNA3 40-60FN (220) (7039846)



GRUNDFOS 

TECHNICAL SPECIFICATIONS

Colour black/red

Material stainless steel

Approval WRAS

Pump body stainless steel

Material impeller 1 fibreglass-reinforced PES

Connection flange

Voltage 230VAC

Max. temperature 110 °C

Minimum medium temperature -10 °C
(continuous)

Impellers 1

Frequency 50 Hz

Maximum ambient temperature 40 °C

Pressure 10 bar

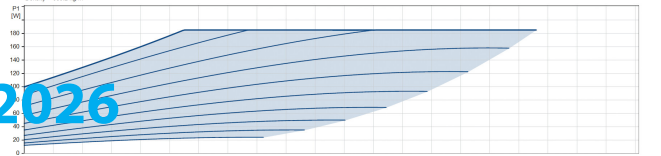
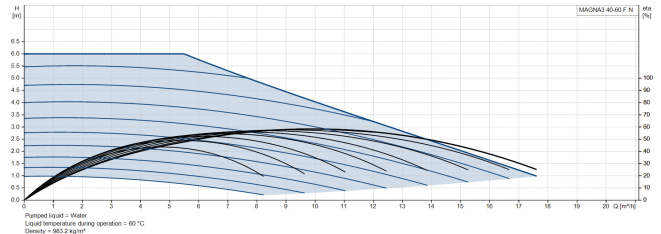
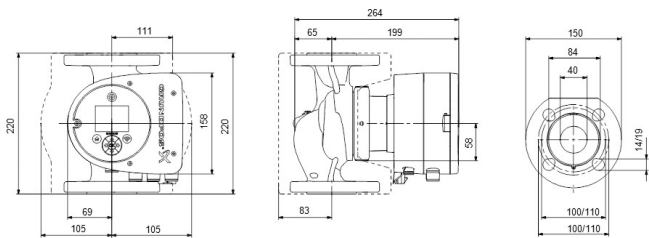
Minimum ambient temperature 0 °C

Type MAGNA3 40-60FN (220)

MWC 6 m

Size DN40

Ampere 0.8 A



Last modified date: 09/05/2026

Bosta UK Ltd.
Reflection House
Olding Road
Bury St. Edmunds
Suffolk
IP33 3TA
T +44 (0) 1284 716580
E enquiries@bosta.co.uk
<http://www.bosta.com>