

Rovatti Centrifugal pump cast iron DN50 DIN flange black type T0F-50 (7024364)



rovatti pompe

TECHNICAL SPECIFICATIONS

Colour black

Material cast iron

Material impeller 1 cast iron

Connection DIN flange

Max. temperature 60 °C

Press 50

Suction 50

Type TOF-50

Output Power 7,5-15 HP

MWC 53 m

Size DN50

Max flow rate 33 m³/h

DIMENSIONS

Cr-1 90 mm

Ct-1 160 mm

Dd 41.28 mm

H 294 mm

H 294 mm

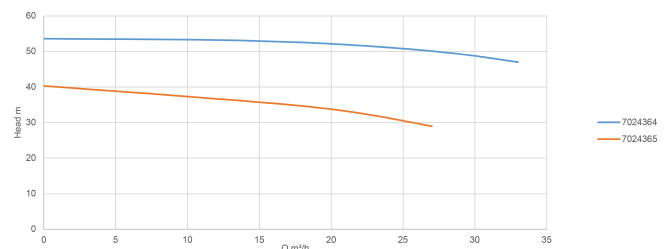
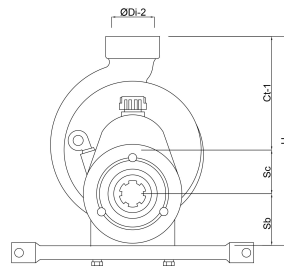
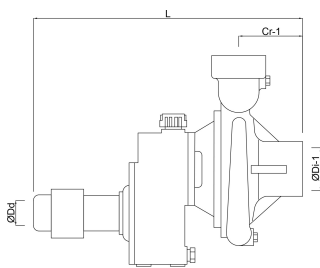
L 374 mm

Sb 73 mm

Sc 61 mm

ØDi-1 2 "

ØDi-2 2 "



PRODUCT INFORMATION

The tractor driven pumps type T0 come installed with the "E" impeller which provides the highest pressure. For different impellers please consult with us.

The T0 pumps come with the Standard Gear Ratio (PTO) of 540 RPM. Connect the pumps directly to the PTO (tractor).

The T0 pumps come with a lattyflon stuffing-box packing which is ideal for dirty water installation. The stuffing-box packing needs to be adjusted accordingly with the Twinner System (2 parts) so it is always leaking in order to keep it lubricated and cool.

The T0 pumps are delivered with a suction pipe, elbow and a filtration basket

The T0F-50 type is non priming pump and the T0F-50A type is self-priming pump.

Application

Medium Pressure Sprinkler for Fertigation Systems: types T0F-50 and T0F-50A.

Last modified date: 08/05/2026

Bosta UK Ltd.
Reflection House
Olding Road
Bury St. Edmunds
Suffolk
IP33 3TA
T +44 (0) 1284 716580
E enquiries@bosta.co.uk
<http://www.bosta.com>