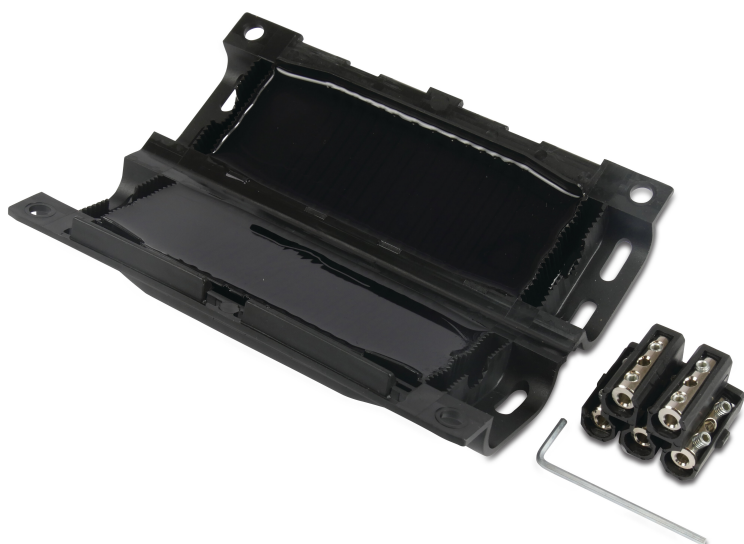


Gel connector for cable NYY 3 x 1,5 until NYY 5 x 2,5 PP type GTQ 6 (7033949)



TECHNICAL SPECIFICATIONS

Type	GTQ 6
Material	PP
Temperature range	-40°C - +140°C
IP value	IP68

PRODUCT INFORMATION

Gel-filled moulded shell with double seal and 5-pole terminal block provides a weather and moisture-resistant connection and branch sleeve for cables up to 5 x 2.5 mm². Can be installed outdoors, in the ground, in water, in cable ducts and indoors. Moulded shell is made of impact-resistant, UV-resistant, halogen-free PP with double seal, and is weather and moisture-resistant. Temperature-resistant from -40°C to +80°C and tested to DIN EN 50393. No special tools required. The unit can be opened again. Quick and easy installation. Ready for immediate use. Included in the box: - Gel-filled moulded shell with double seal - 5-pole terminal block for cables up to 2.5 mm², incl. suitable Allen key - Cable tie to securely close the moulded shell - Assembly instructions

Last modified date: 09/11/2025

Bosta UK Ltd.
Reflection House
Olding Road
Bury St. Edmunds
Suffolk
IP33 3TA
T +44 (0) 1284 716580
E enquiries@bosta.co.uk
<http://www.bosta.com>