

**Jet pump cast iron 1" female
thread 3,2A 230VAC blue type
Jet 100 A (7031126)**



TECHNICAL SPECIFICATIONS

Colour blue

Type Jet 100 A

Material cast iron

Pump body cast iron

Material impeller 1 noryl

MWC 50 m

Connection female thread

Voltage 230VAC

Max. temperature 40 °C

Power 1.1 kW

Ampere 3,2 A

Max flow rate 3.6 m³/h

Press 1 "

Maximum ambient temperature 40 °C

Suction 1 "

Size 1"

BEP Capacity 2.4

BEP Head 30

PORlh 0.55

PORhh 50

PORlq 0.3

PORhq 3.6

DIMENSIONS

Cb-1 147 mm

Cl-1 90 mm

G-1 135 mm

H 200 mm

H 200 mm

L 390 mm

L 375 mm

Mr 220 mm

O 10 mm

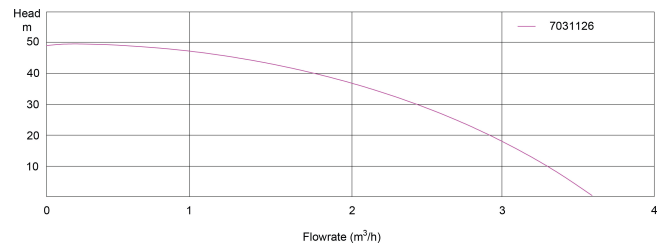
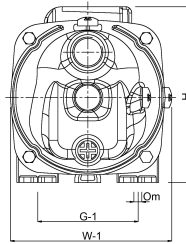
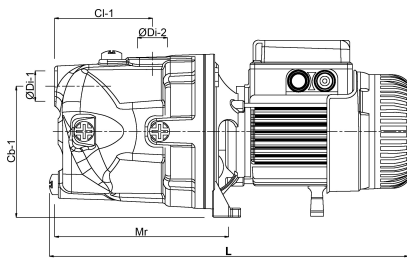
W 180 mm

W-1 180 mm

ØDi-1 1 "

ØDi-2

1 "



PRODUCT INFORMATION

Single-stage self-priming centrifugal surface pump equipped with the Venturi tube system for increased suction capacity, designed for pumping of clean cold water from own intakes and for increasing pressure. The pump body is made of durable cast iron, and the pump motor is provided with thermal protection. The pump has a power cable with a plug. Application: Supply of water to houses, holiday houses, allotments and gardens. When combined with pressure tanks, the pumps can be used for single- and multi-family residential housing, in industrial applications and for irrigation purposes.

Last modified date: 09/05/2026

Bosta UK Ltd.
Reflection House
Olding Road
Bury St. Edmunds
Suffolk
IP33 3TA
T +44 (0) 1284 716580
E enquiries@bosta.co.uk
<http://www.bosta.com>