

# Rovatti Centrifugal pump cast iron DN50 DIN flange black type T0F-50A (7024365)



**rovatti pompe**

# TECHNICAL SPECIFICATIONS

Colour black

Material cast iron

Material impeller 1 cast iron

Connection DIN flange

Max. temperature 60 °C

Press 50

Suction 50

Type TOF-50A

Output Power 5-7,5 HP

MWC 40 m

Size DN50

Max flow rate 27 m<sup>3</sup>/h

# DIMENSIONS

Cr-1 89 mm

Ct-1 66 mm

Dd 41.28 mm

H 326 mm

H 343 mm

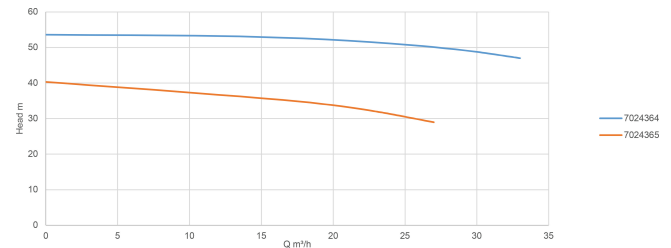
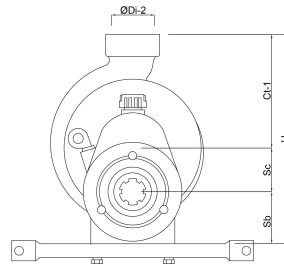
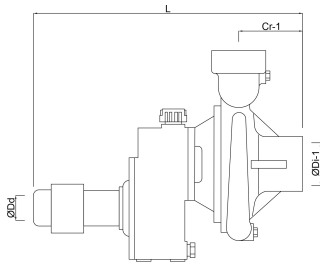
L 408 mm

Sb 73 mm

Sc 187 mm

ØDi-1 2 "

ØDi-2 2 "



## PRODUCT INFORMATION

The tractor driven pumps type T0 come installed with the "E" impeller which provides the highest pressure. For different impellers please consult with us.

The T0 pumps come with the Standard Gear Ratio (PTO) of 540 RPM. Connect the pumps directly to the PTO (tractor).

The T0 pumps come with a lattyflon stuffing-box packing which is ideal for dirty water installation. The stuffing-box packing needs to be adjusted accordingly with the Twinner System (2 parts) so it is always leaking in order to keep it lubricated and cool.

The T0 pumps are delivered with a suction pipe, elbow and a filtration basket

The T0F-50 type is non priming pump and the T0F-50A type is self-priming pump.

Application

Medium Pressure Sprinkler for Fertigation Systems: types T0F-50 and T0F-50A.

**Last modified date: 08/05/2026**

Bosta UK Ltd.  
Reflection House  
Olding Road  
Bury St. Edmunds  
Suffolk  
IP33 3TA  
T +44 (0) 1284 716580  
E [enquiries@bosta.co.uk](mailto:enquiries@bosta.co.uk)  
<http://www.bosta.com>