

**Foras Centrifugal pump cast
iron DN50 x 50 mm x DN32 x 32
mm DIN flange 10bar 15A
400/690VAC blue type MN32
200 A (0920293)**



TECHNICAL SPECIFICATIONS

Colour blue

Material cast iron

Material impeller 1 cast iron

Connection DIN flange

Voltage 400/690VAC

Max. temperature 90 °C

Minimum medium temperature -10 °C
(continuous)

Maximum ambient temperature 40 °C

Minimum ambient temperature 0 °C

Type MN32 200 A

Output Power 10 HP

Max. head 58,6 m

Size DN50 x 50 mm x DN32 x 32 mm

Seal type H

Length 565 mm

Width 268 mm

Weight 79 kg

Power 7.5 kW

Height 340 mm

Max flow rate 33 m³/h

BEP Capacity 29

BEP Head 47

Efficiency 57 %

Press 32

Suction 50

Packaging dimensions L/W/H 627 x 287 x 408 mm

DIMENSIONS

Cb-1 160 mm

Cl-1 80 mm

Ct-1 180 mm

G-1 190 mm

H 340 mm

H 340 mm

L 565 mm

Mc 70 mm

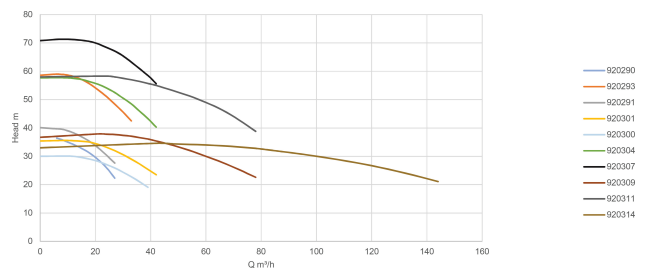
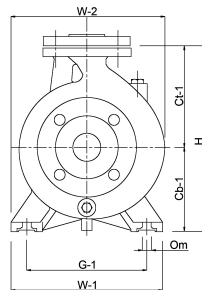
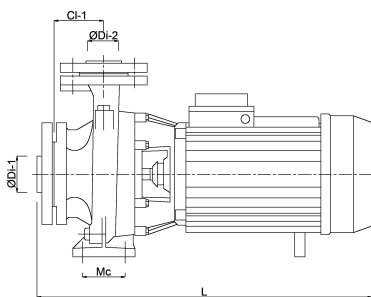
O 14 mm

W-1 240 mm

W-2 268 mm

ØDi-1 50 mm

ØDi-2 32 mm



PRODUCT INFORMATION

The pumps are supplied complete with counter flanges with female thread.

Mechanical seal.

Maximum water temperature 90°C.

Last modified date: 12/06/2026

Bosta UK Ltd.
Reflection House
Olding Road
Bury St. Edmunds

Suffolk
IP33 3TA
T +44 (0) 1284 716580
E enquiries@bosta.co.uk
<http://www.bosta.com>